

The Principia Center  
Meeting at Northeast Presbyterian Church  
601 Polo Road  
Columbia, SC 29223  
e-mail: [Principia@principiacenter.org](mailto:Principia@principiacenter.org)  
website: <http://www.principiacenter.org/>

# Parent & Student Handbook 2018-2019

**TABLE OF CONTENTS**

Handbook Purpose ..... 3

Statement of Faith ..... 4

Program Dates ..... 6

Program Fees ..... 7

Tuition ..... 7

Grading Policy ..... 8

Course Description, Assignments, and Communication ..... 8

The Principia Center Literature and Composition Course Guidelines for High School..... 9

The Principia Center Science Guidelines for Middle and High School ..... 10

Electives and Enrichment Courses..... 11

Code of Conduct, Dress Code, and Discipline Policy ..... 12

Waiver and Release of Liability ..... 14

Photography Release for Minor Child or Children..... 15

Technology Requirements ..... 16

Sickness Policy ..... 16

Expectations ..... 17

Inclement Weather Policy ..... 17

Compassion Canteen..... 17

Parent Evaluations ..... 17

Student Evaluation ..... 18

Parking and Drop Off Map ..... 19

Map of Church ..... 20

    Lower Level – 100 ..... 20

    Main Level – 200 ..... 21

    Upper Level – 300 ..... 22

## Handbook Purpose

The Principia Center produced this handbook in the spring of 2015 and may amend, modify, or discontinue at any time the policies, rules, and regulations to which it refers. It contains an overview of parent board policies and regulations. The Principia Center provides this handbook so that students and their parents may become familiar with our mission and the school's policies.

**Who We Are:** The Principia Center is a resource center for homeschooling families in Columbia, SC, and the greater Columbia area. For students in grades 7-12, we offer weekly classes at Northeast Presbyterian Church on Polo Road with a Christ-centered focus that encourage students to know and love the Lord.

This document refers to these positions:

**Instructor Coordinator** - recruits instructors, trains them on the online grading tool, and attends to their needs as they teach our students; works with our parent volunteers to organize events.

**Volunteer Coordinator** - recruits and oversees volunteers serving The Principia Center.

**Parent Board** - a group of parents who meet monthly to handle to oversee the actions and activities of The Principia Center.

**Mission Statement:** The Principia Center exists to impart knowledge to students in a manner that equips them to live confidently as Christians, able to articulate their own worldview and to understand the views of the world around them.

**Vision Statement:** We desire that our students grow to be mature Christians, active in changing and challenging our post-Christian culture for the glory of Jesus Christ.

**Core Values:** We provide excellence in instruction through qualified teachers, and direction through a parent board, all of whom love, honor, and serve the Lord.

### We offer:

- Many disciplines such history, literature, math, science, and foreign languages.
- Courses taught from a Christian worldview and contrasted with other worldviews
- Rigorous academic preparation with honors options available, taught in a setting of small classes, facilitating the opportunity for students to experience accountability in addition to that found in their homeschool setting.
- Once a week class times on Mondays (8:30-4:00)
- Excellent instructors with varied experiences in their disciplines who offer individual support for learning challenges, while modeling Christ-likeness in their lives

## Statement of Faith

### SCRIPTURE

We believe the Scriptures are (in the original autographs) the complete, inerrant, adequate, and final repository of divine revelation. Comprising the sixty-six canonical books of the Old and New Testaments in the English Bible, they are authoritative for life and faith, and constitute the *principium cognoscendi externum* of theological reflection.

Psalms 19; Proverbs 30:5; John 16:13-14, 17:17; II Timothy 3:16; II Peter 1:21; 3:15-16

### GOD

We believe Scripture presents the one, true, eternal, sovereign, almighty God who is the creator, sustainer of life, judge of all the earth, and fount of mercy and grace. He alone is worthy of all praise and honor and blessing. Within the divine being there are three distinctions: the Father, the Son, and the Holy Spirit who are one in essence, attribute, will, word, and work. Each is in full possession of the divine essence and attributes. The order in this trinity is expressed in Scripture as all things are out of the Father, through the Son, and in/ by the Holy Spirit. God is the *principium essendi* of all scientific and theological inquiry.

Deuteronomy 6:4; Psalm 115:3, 138:5; Daniel 4:25; John 14:6, 26, 20:31; Romans 1:7, 11:36; Ephesians 1:11, 2:4-7, 3:20-21; I Timothy 1, 7; Titus 2:13; I Peter 1:1-3

### THE LORD JESUS CHRIST

We believe and confess that Jesus Christ is Lord; without sin, fully God and fully man in one person. He is the expression in bodily form of the invisible God. As the high priest of the New Covenant, He offered himself for the sins of his people, was crucified, buried, and raised from the dead after three days. He is the treasure trove of wisdom and knowledge, and the standard by which all philosophies and ideas are measured. His Church awaits His second coming to earth in glory.

John 1:1-14; 19:30; Acts 2:23; I Corinthians 15:3-8; II Corinthians 5:21; 4:3,4; 10:3-6; Galatians 4:4; Philippians 2:5-11; Colossians 2:1-11; I Timothy 2:5; Hebrews 8:1-7

### MAN

We believe that man was created in the image of God and given stewardship over creation. Through one act of disobedience to an express command of God, Adam fell from a state of positive holiness into sin which affected the entire human race incurring: condemnation; subjection of the body to corruption, death, and dissolution from the soul; alienation from God; distortion of the mind in thought; and a disposition which is hostile toward God.

Genesis 1:26-27; Romans 1:18-32, 5:12-19, 6:16, 20, 8:5-8; I Corinthians 2:14; Ephesians 2:2-3

### **SALVATION BY GRACE**

We believe that salvation is secured by the merits of the Savior and not by any contribution from sinful man. It is applied to the sinner by the calling and regenerating work of the Holy Spirit; the first exercise of this new life in the believer being faith in the Savior. This work of grace is continued and brought to completion by the sanctification, preservation, and ultimate glorification of the believer.

Romans 5:8-10, 8:29-30; I Corinthians 1:26-31; Ephesians 2; Titus 3:4-7

### **THE MATERIAL UNIVERSE**

We believe that the visible universe was created in final form, *ex nihilo*, perfect, and as a fit habitation for man. It is marred only by the original and actual sin of man; and is subjected to futility because of the entrance of sin into the world. Vast in scope and complexity, minute in detail and intricacy, profound in beauty and genius, the material universe is revelatory of the wisdom, glory, eternal power, invisible attributes, and wonder of God. It is the *principium cognoscendi externum* of scientific inquiry.

Genesis 1; Psalm 19:1-4; Romans 1:18-20, 8:19-22; Hebrews 1:2; 11:3

### **THE POWER OF DARKNESS**

We believe that there is an unseen spirit world which is opposed to the kingdom of God, ruled by Satan, limited in authority, and destined for judgment. It is intent on deceiving, blinding the mind, and destroying man, who is the image of God. It is rendered powerless through the incarnation, death, and resurrection of our Lord Jesus Christ.

Luke 22:53; II Corinthians 4:3-4; Ephesians 6:12-16; Colossians 1:13; Hebrews 2:14-15

### **THE CHURCH**

We believe that the Church is composed of those redeemed by the Savior and manifests His glory. It is equipped for ministry with the gifts of the Holy Spirit and the offices of leadership. Founded as the pillar and support of the truth, the Church is commissioned to teach the entire counsel of God and to proclaim the Gospel throughout the world;

Matthew 28:18-20; Ephesians 2:20-21; 4:1-16; Titus 3:14-15

### **EDUCATION**

We believe that parents are charged to pass the knowledge of God on to children, and thus education is centered in family life. The mind and heart of man is to be confronted with the truth of God and sheltered from error. Biblically informed education is an extension to the Church's ministry of making disciples, and is to be carried out from the perspective of God as the *principium essendi*, and Scripture and the world as the *principia cognoscendi externa*.

Deuteronomy 6; Matthew 28:18-20; Colossians 1:18-25, 2:1-11

**Program Dates**

**Fall Semester 2018**

Classes Begin; Orientation	August 13, 2018
Labor Day, No Classes	September 3, 2018
Parent Day, Regular Class Schedule	September 10, 2018
Fall Break week	October 8, 2018
Thanksgiving Break week	November 19, 2018
Last Class for Fall Semester	December 17, 2018

**Spring Semester 2019**

Classes Resume	January 7, 2019
Winter Break week	February 18, 2019
Easter Break week	April 22, 2019
Last class	May 6, 2019
Year End Celebration	May 13, 2019 from 10:30am-12:00pm, lunch to follow

### Program Fees

Registration Fees      \$100/per family by May 31, 2018,  
                                 \$150 per family after May 31, 2018;  
                                 payable at registration.

Lab Fee                 \$30 per student registered for middle school science due at registration.  
                                 \$50 per student registered for high school science due at registration.

Make checks for registration and lab fees out to The Principia Center and send along with your forms to:

The Principia Center  
c/o Amy Sabin  
2108 Bee Ridge Road  
Columbia, SC 29223

### Tuition

Enrichment Classes                 \$250 per class per year  
Middle School Classes               \$275 per class per year\*  
High School Classes                 \$375 per class per year  
Honors Option                         \$50 per class per year  
Study Hall Fees                        \$80 per student per year

\*Tuition for physical science is at the middle school rate. It is a high school level course but does not qualify as a "lab science."

Parents are encouraged to work closely with their accountability associations to ensure requirements are being met.

Parents may pay tuition in two installments: ½ at registration and ½ prior to December 6, 2018.

Parents may register students for as many or as few classes as desired. Classes with fewer than 6 students registered by June 25, 2018 will be cancelled unless registered families and instructors agree otherwise. Classes will be full when they reach 12 students.

Tuition checks should be made out to the individual instructor, study hall checks should be made out to The Principia Center, and all checks should be sent to:

The Principia Center, c/o Amy Sabin, 2108 Bee Ridge Road, Columbia, SC 29223

### **Grading Policy**

Our instructors provide grade recommendations for assignments and tests. We also provide written feedback at each semester's end for parent use. This instructor feedback includes how the student demonstrates respect while interacting with instructors and peers; work habits of the student including completion of assignments, neatness, attention to task, following instructions, and oral presentations; class time assessment related to participation, punctuality, and timely submission of homework. Academic strengths and weaknesses are also addressed.

If at any time parents need feedback about their students, they should contact the instructor directly. Also, if parents need final grades prior to the End of Year Celebration, they should make arrangements with the instructor. Instructors will use the official South Carolina Grading Scale.

#### South Carolina Grading Scale

90-100	A
80-89	B
70-79	C
60-69	D
0-59	F

### **Course Description, Assignments, and Communication**

Our instructors supply a course description for each class. These provide a summary of the planned course of study.

A review of the day's class and details on assignments for the week will be communicated by Tuesday morning in the Review and Assignments (R&A) document.



## **The Principia Center Literature and Composition Course Guidelines for High School**

The following guidelines have been established by The Principia Center in order to help parents plan for their student's academic needs. Because students complete schoolwork at such vastly different speeds, parents may want to consider the amount of time each of the following components will require of their student's schedule in order to plan an appropriate work & extracurricular load. If any of these guidelines cause concern, we highly recommend speaking with the specific instructors regarding their approaches before proceeding with registration.

### **Reading**

At the high school level, the amount of reading increases significantly. 80-100 pages per week of reading texts, stories, poems, critiques & novels is considered within the normal range in homeschooling, private & public school environments. This number may vary depending on the difficulty of the reading material.

### **Short Answer**

In order to facilitate deeper thinking and interaction with the material, instructors may assign short answer questions on a weekly basis. In the 9th grade, students should expect to answer around 7 questions/week. In 10th-12th grade, they may be required to respond to up to 10 questions.

### **Essays**

Students may be expected to write one essay every 2-4 weeks, often increasing in frequency as they progress in the high school track.

### **Research Papers**

There will be one research paper each year that will require long term planning & steady progress in order to complete. The number of pages of this paper will range from 3-5 pages for 9th graders and 5-7 pages for 10th-12th graders. The instructors provide time management tips and tools throughout the steps of the project.

### **Tests/Quizzes**

Tests and quizzes may be given at the instructor's discretion. When they are assigned, the instructors will adjust the workload to allow the necessary study time.

### **Mechanics**

South Carolina law requires attention be paid to grammar, vocabulary, research & note taking skills. Our 9th grade General Literature Course provides a full grammar review. All other courses will address grammar in the context of writing. Vocabulary will be acquired in the context of reading assignments; instructors may choose to include these as part of the assigned homework. Research skills will be taught in the context of the research papers, and all students are encouraged to take notes in class. No formal instruction in note taking is part of our Literature and Composition courses.

## **Honors**

Our honors level Literature and Composition courses may include a maximum of the following additions to the normal expected workload: four compositions/essays, four novels throughout the school year, and one project per semester. In addition, the length of the already assigned research paper may increase to 7-9 pages in the 10th-12th grades. Parents are encouraged to work alongside our instructors to adjust the workload in order to meet their accountability associations' requirements for honors.

## **The Principia Center Science Guidelines for Middle and High School**

### **General Science**

- Complete 100% of the textbook (16 modules)
- Approximately 48 labs
- 1 lab report per week
- 16 tests
- Occasional vocabulary quizzes
- Optional challenge assignments

### **Physical Science**

- Complete 100% of the textbook (16 modules)
- Approximately 48 labs
- 1 lab report per week
- 16 tests
- Frequent vocabulary quizzes
- Eligible for high school credit depending on accountability association

For the optional Honors credit a student will complete 16 challenge assignments. Most of the challenge assignments involve research and a short answer in writing. In addition, Honors students will complete project of his choosing, presenting the results in class. Honors students may also be required to complete 8-10 additional lab reports. Parents are encouraged to work alongside our instructors to adjust the workload in order to meet their accountability associations' requirements for honors.

### **Biology:** (Science Shepherd Biology by Scott Hardin)

- Complete 100% of the textbook (34 chapters - several are skimmed)
- Complete 32 labs
- 1 lab report per week
- 8 tests and 5 Papers/projects
- Eligible for high school credit

For the optional Honors credit a student will complete additional reading on more advanced biology topics as assigned by the instructor, read one approved non-fiction, biology related book and write a short paper (list available from the instructor). Honors students will also complete an individual research project, which includes an experiment and visual presentation. Parents are encouraged to work alongside our instructors to adjust the workload in order to meet their accountability associations' requirements for honors

**Chemistry:** (Exploring Creation with Chemistry by Jay Wile)

- Complete 100% of the textbook (16 modules)
- Approximately 32 labs
- Approximately 1 lab report per week
- Weekly quizzes, 4 quarterly tests
- Eligible for high school credit

For the optional Honors credit the student will complete additional weekly reading related to topics on the SAT II in Chemistry, additional questions on the weekly online quizzes and tests, and a research project including an experiment and visual presentation. Parents are encouraged to work alongside our instructors to adjust the workload in order to meet their accountability associations' requirements for honors.

**Conceptual Physics:** (Conceptual Physics by Paul Hewitt)

- Complete 100% of the textbook (40 chapters: 4 chapters are review of general chemistry and 5 chapters are skimmed for key concepts)
- Approximately 32 labs
- Approximately 1 lab report per week
- 30 weekly quizzes and 2 semester tests
- Eligible for high school credit

For the optional Honors credit the student will complete an Honors Academic Physics course with additional weekly interaction with the instructor (possibly online), additional reading and worksheet assignments, additional questions on the weekly online quizzes and tests, and a research project including an experiment and visual presentation. Algebra 2 is a prerequisite for the honors option because of the advanced math required. The honors level combines the additional material for a standard academic physics class with targeted preparation for the SAT II in Physics. Parents are encouraged to work alongside our instructors to adjust the workload in order to meet their accountability associations' requirements for honors.

### **Electives and Enrichment Courses**

Our Elective courses are defined as academic courses beyond the core English, math, or science. According to South Carolina Law, High School electives must include at least 120 hours of contact time with the subject for 1.0 unit credits and 60 hours of contact time for .5 unit credits. At The Principia Center, High School electives will meet these requirements.

Enrichment Courses provide a richness of exposure and understanding that are at the essence of our desire to see our children grow, explore and discover their calling in God's kingdom. They require little or no homework, and so they do not qualify for high school credit. These courses are ideal for Middle and High School students.

Electives and Enrichment Courses are wonderful opportunities for students to discover the greatness of God in a variety of subject matters. They also help students identify their particular God-given abilities and areas of interest, and provide a well-rounded education. We encourage all students to take advantage of the opportunity to participate in our Academic Electives and Enrichment Courses.

## Code of Conduct, Dress Code, and Discipline Policy

Please read all of the items listed first to yourself and then with your students. Be sure you and they understand all aspects and agree to strive for excellence in these areas.

### Code of Conduct

- All students are expected to behave in a respectful manner towards other students and those in authority. There will be no harmful behavior, use of profanity, crude language, or inappropriate talk at any time.
- Students are to be punctual when arriving for class and when submitting assignments.
- No iPods or cell phones are to be used in class. Student use of computers and tablets in class is at the discretion of the instructor. These devices can be used quietly while in study hall.
- Food and drinks should be consumed in the lunch room or outside. Water bottles are permitted in classrooms and study hall. Exceptions are allowed for instructor-organized events.
- Students participating in study hall will sign in upon arrival and sign out upon departure to their next class. While in study hall, students are expected to work quietly to allow maximum benefit of study time to all students. There is a clock in study hall to ensure timely departure for the following class.
- Cell phones should be turned off during class. Cell phones ringing or otherwise distracting students while class is in session may be confiscated for the rest of class and parents will be notified of the disruptive behavior.
- Students participating in classes will be under the supervision of the instructor, however, a responsible adult must be available by phone at all times in the event of an emergency or a disciplinary problem.
- No student will be allowed to roam around the church unattended. All persons in attendance should treat the facility with respect. There will be no horseplay allowed at any time. If a student is not in class he must be in study hall. **Under no circumstances is a student allowed to enter areas of Northeast Presbyterian Church not designated for use by The Principia Center without permission from the Instructor Coordinator. Students found breaking this rule will be subject to removal from the program.** (See *Map of Church* section)
- All students who are on campus are to attend devotions at the designated time.
- For security reasons, students are never to prop open doors.
- No chewing gum is permitted on campus.
- No public display of affection between students is permitted on campus.

### **Dress Code**

Our desire is to honor God in everything, including our apparel. Therefore, clothing worn at Principia should be appropriate, tidy, and modest. Below are the specifics as to what is expected.

Clothing should fit comfortably, covering the full torso even with arms raised, but not be form fitting. Attire should be free of holes. Gentlemen may wear blue jeans, khakis, cargo pants, or knee-length shorts. No sagging pants, please. Ladies may wear pants, capris, or skirts that are knee length. All shirts should have sleeves. Words on clothing should be in good taste. Hats should not be worn inside the building.

If there is a violation of the dress code, one of the instructors will speak to the student first. Every attempt should be made to correct the dress code violation that day. If it becomes a recurring issue, the parent will be notified.

### **Discipline Policy**

Many parents value the opportunity Principia Center provides for their child to learn expected classroom behaviors such as are exhibited when using self-control to take turns when speaking, working with others, and sitting in their seat during class. We expect students to be diligent in staying on task and focused on the subject matter. Our instructors aspire for each student to be respectful listeners and participants in class discussion. When encouragement or admonition is given in regard to student behavior, it should be received in the intended humble spirit in which it is given. However, if a parents feels that a child has been treated unjustly, the first step in Biblical conflict resolution (Matthew 18:15-16) is to seek understanding by contacting the offending party, and if further action is necessary to speak with the Instructor Coordinator.

#### **Guidelines for discipline:**

- The instructors are expected to maintain order in the classroom; however, continuously disruptive students will be dealt with by the instructor by speaking to that student in private, then to the parents as necessary.
- A student who is distracting other students or showing disrespect in any way may be removed from the classroom and placed under the authority of another adult. This includes students who are not arriving to class on time, not coming to class with completed homework, and not showing a desire to participate. The instructor will notify the parent if behavior constitutes removal from the class.
- If the problem is not resolved in the next two class periods, a consultation with the parent, instructor, and one of our Coordinators will result. At this point the situation will be reviewed by the Parent Board most likely resulting is the student's dismissal from the program with the expectation that financial obligations will be fulfilled.
- If at any time you have a problem with an instructor, coordinator, board member, or other parent, please see that person in private first to gain resolution.
- The Parent Board will decide whether an offense is egregious and warrants immediate removal from the program.

**Waiver and Release of Liability**

The undersigned, as the natural/legal guardians of \_\_\_\_\_, (hereinafter called “Child”), hereby WILLINGLY AND VOLUNTARILY AGREE TO RELEASE, INDEMNIFY AND FOREVER HOLD HARMLESS the PRINCIPIA CENTER and the Northeast Presbyterian CHURCH, along with their agents, officers, officials, board members, employees and their assigns, for any injuries and/or damages, whether to person or property, in any way resulting from the Child’s participation in any activities associated with the Principia program (hereinafter the “Program”).

This Waiver and Release Liability shall have full effect throughout the duration of the Program beginning August 1, 2018 and ending May 31, 2019 (hereinafter the “Program Period”) as well as during any activities, meetings, events, functions, or other gatherings reasonably associated with the Program that may occur outside the Program Period.

The undersigned acknowledge that injuries resulting from participation in the Program are possible, including the potential for permanent disability and death. The undersigned further acknowledge the potential for damage to personal property resulting from participation in the Program. The undersigned VOLUNTARILY, WILLINGLY, AND FREELY ASSUME ALL SUCH RISKS, both known and unknown, even if arising from the negligence of those persons and entities released from liability above and assume full responsibility for the Child’s participation in the Program.

THE UNDERSIGNED , ON BEHALF OF THE CHILD AND HIS/HER HEIRS EXECUTORS AND ASSIGNS, HAVE READ THIS WAIVER AND RELEASE OF LIABILITY, FULLY UNDERSTANDING ITS TERMS, UNDERSTAND THAT WE HAVE GIVEN UP SUBSTANTIAL RIGHTS BY SIGNING IT, AND SIGN IT FREELY AND VOLUNTARILY WITHOUT ANY INDUCEMENT.

This \_\_\_\_\_ day of \_\_\_\_\_, 20\_\_\_\_.

\_\_\_\_\_  
Parent/Guardian Signature

\_\_\_\_\_  
Parent/Guardian Signature

**Photography Release for Minor Child or Children**

I hereby authorize The Principia Center, hereafter referred to as "Organization," to publish photographs taken from June 1, 2018 to May 31, 2019 of myself and/or the minor child or children listed below, and our names and likenesses, for use in the The Principia Center's print, online and video-based marketing materials, as well as other Organization publications.

I hereby release and hold harmless The Principia Center from any reasonable expectation of privacy or confidentiality for myself and for the minor child and children listed below associated with the images specified above. Further, I attest that I am the parent or legal guardian of the child or children listed below and that I have full authority to consent and authorize The Principia Center to use their likenesses and names.

I further acknowledge that participation is voluntary and that neither I, the minor child, or minor children will receive financial compensation of any type associated with the taking or publication of these photographs or participation in Organization marketing materials or other Organization publications. I acknowledge and agree that publication of said photos confers no rights of ownership or royalties whatsoever.

I hereby release The Principia Center, its contractors, its employees and any third parties involved in the creation or publication of Organization publications, from liability for any claims by me or any third party in connection with my participation or the participation of the minor children listed below.

**Authorization:**

Printed Name: \_\_\_\_\_

Signature: \_\_\_\_\_ Date: \_\_\_\_\_

Street Address: \_\_\_\_\_

City: \_\_\_\_\_ State: \_\_\_\_\_ Zip: \_\_\_\_\_

Relationship to Children: \_\_\_\_\_

**Names and Ages of Minor Children:**

Name: \_\_\_\_\_ Age: \_\_\_\_\_

Name: \_\_\_\_\_ Age: \_\_\_\_\_

Name: \_\_\_\_\_ Age: \_\_\_\_\_

### **Technology Requirements**

Access to word processing, the internet, and the ability to print at home is required for families enrolled in The Principia Center. Internet access is essential for communication; students are expected to provide a hard copy of all written/typed assignments to their instructors, unless the instructor specifies otherwise. Instructors may require certain assignments be typed and some also may need to be submitted electronically.

The Principia Center currently uses GoogleDrive to share files with its families. Each family will need to provide an email address to which we can grant access to these files. It is important that this be an account that is checked regularly as we will also use it to inform families of time sensitive information.

### **Sickness Policy**

Please help us minimize illnesses by keeping your students at home if they exhibit the following symptoms:

. Cold symptoms:

- a constant runny nose, especially with abnormal color or consistency
- nasal or lung/chest congestion
- coughing that is constant or persistent
- recurrent sneezing that is not allergy related

Abnormal temperature

any temperature over 100 degrees

*Symptoms to watch for might be a flushed face, chills, paleness, or skin abnormally warm to the touch. One or all of these symptoms might be present. If in doubt at all, please take your child's temperature. Please keep an obviously sick child at home. A child with a temperature needs to stay home for at least 24 hours. Remember, if you reduce your child's fever with medication like Tylenol, your child is STILL ill. Please do not medicate your child and send them to class. Children spread their illness most during the time they have a fever.*

Vomiting within the last 12 hours.

Diarrhea in the last 12 hours.

Flu symptoms

- fever over 100 degrees (usually high) and
- one or more of the following
  - body aches,
  - sore throat,
  - cough,
  - and/or headache.

*Do not send your student to class until he/she has had no symptoms for at least 24 hours.*

The Principia Center reserves the right to send any student with the above symptoms home for the day.



### **Expectations**

What we expect of parents and students:

#### **Parents**

- Help the student(s) develop a daily schedule for completing assignments
- Refer to the R&A (Review and Assignments) to make sure students are completing their coursework
- Communicate with instructor(s) about any questions or concerns you may have (within 48 hours of receiving R&A)
- Discuss assignments with your student and ask them questions about what they are learning. The role of the parent is crucial to determining the success of a student as they are home educated.
- Regularly check your student's progress using the online grade book
- Proctor tests
- Make sure student(s) arrives on time for his/her first class

#### **Students**

- Be punctual and regularly attend class
- Read and follow R & A's
- Be prepared to listen and discuss ideas and issues addressed during classes

### **Inclement Weather Policy**

Northeast Presbyterian is located in Richland District Two. We will follow Richland Two's decisions about whether to meet classes due to weather. For up to date information about the school board's decisions see their website at <http://www.richland2.org/>.

### **Compassion Canteen**

On one Monday of each month, students at The Principia Center sell drinks, treats, and snacks to raise money for Compassion International. Our Compassion host families purchase drinks and snacks and provide home-made treats for our monthly sales.

### **Parent Evaluations**

We highly value input from our parents, therefore parents will have the opportunity to participate in surveys to evaluate their perception of how the class is progressing. Items evaluated will be the following:

- The class Course of Study/Syllabus and its ease of use
- Their perception of student progress
- Their perception of how the information is being conveyed
- Their personal comments and suggestions

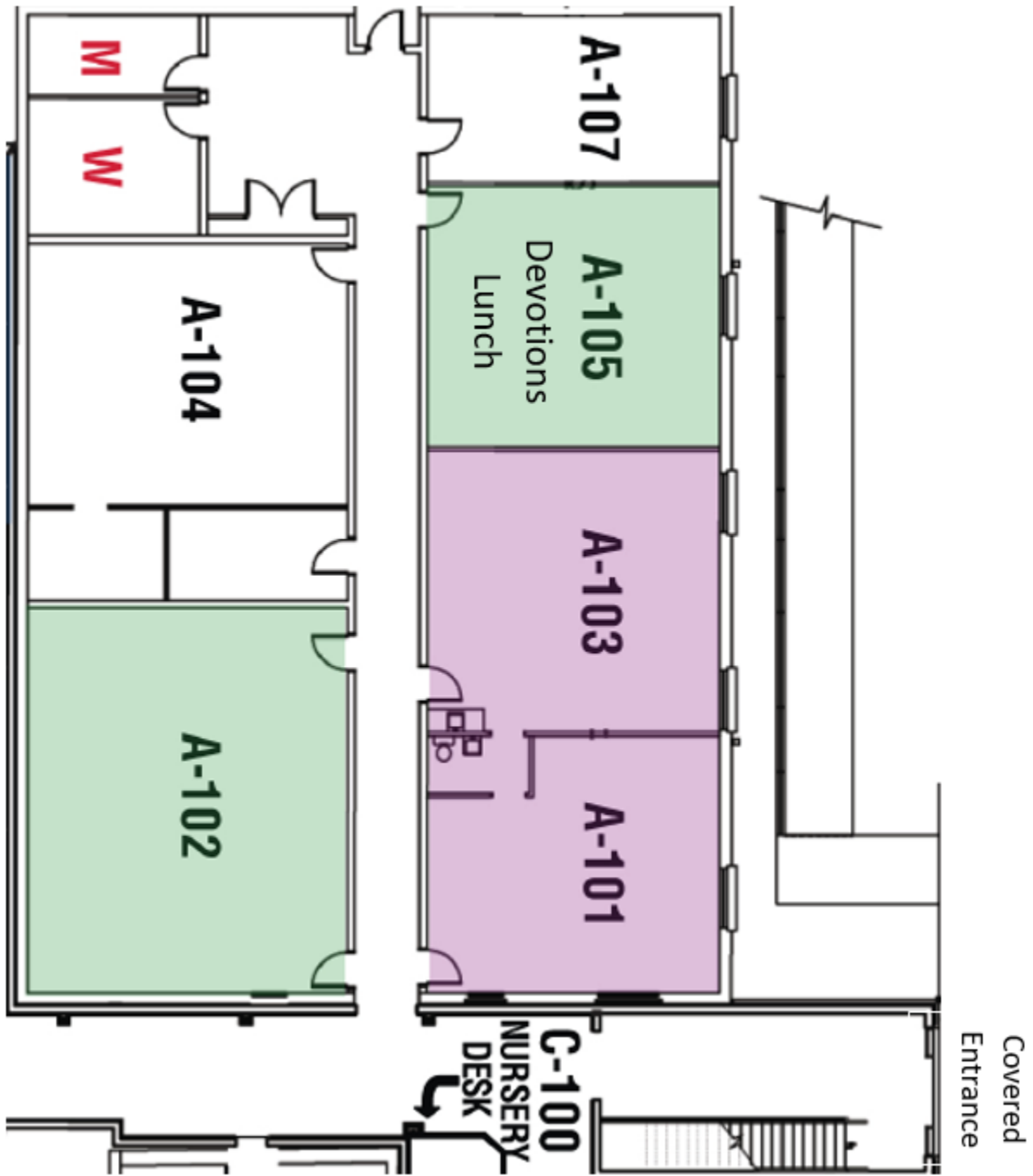
We use this feedback to help our instructors stay connected with the needs of our families and us as a resource to the homeschooling community.

### **Student Evaluation**

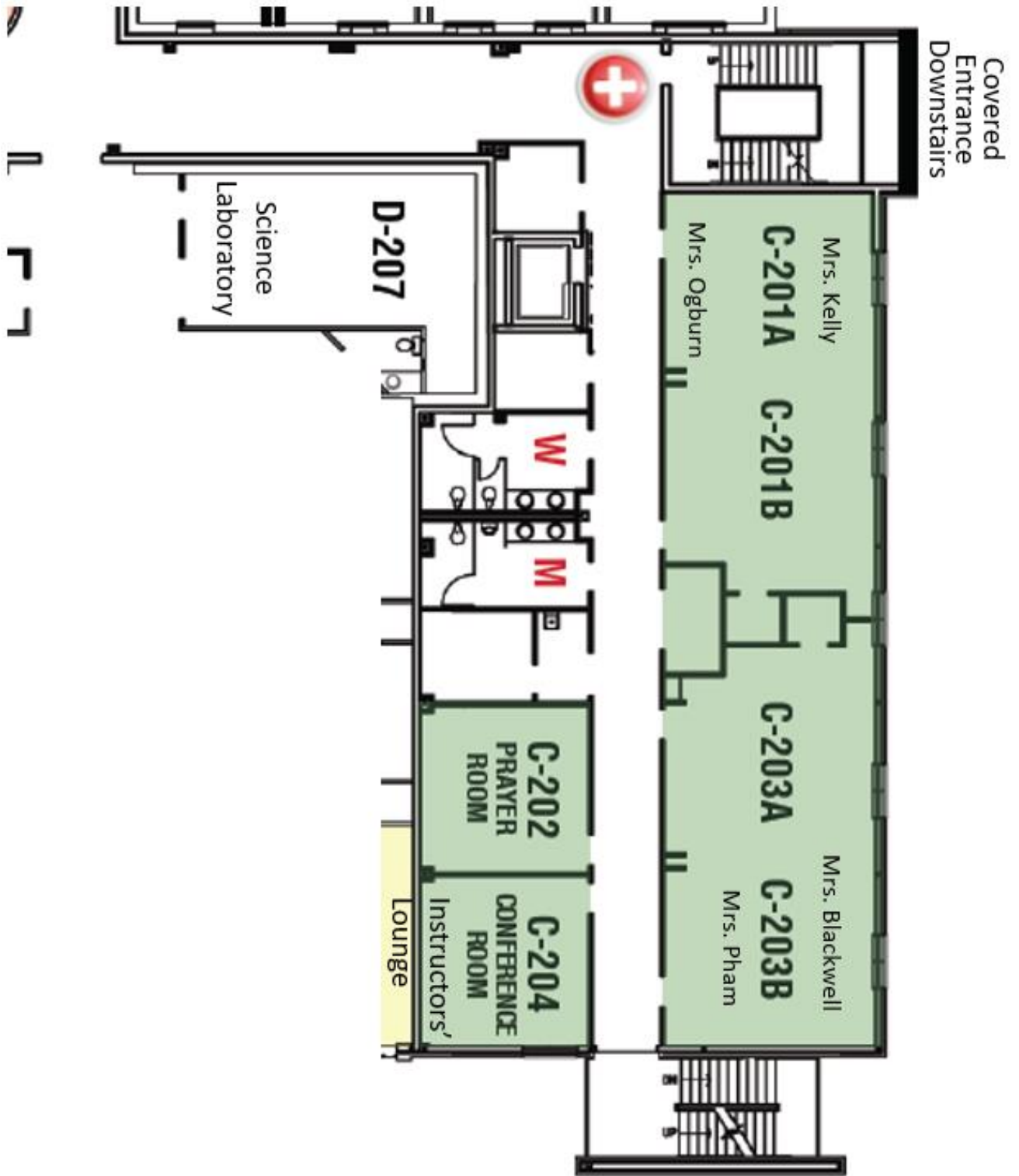
Students will be surveyed to evaluate their perspective of their classes as well. Student evaluations help the instructor gauge how effectively she/he is connecting with the students. being perceived by the students. Students will be asked about the course description, R&A's and its ease of use, if they understood how they would be graded, how clearly the instructor explained concepts in class, the pace of the class, and the amount of information that is being covered, and for their suggestions and general comments.



**Map of Church  
Lower Level – 100**



Map of Church  
Main Level – 200



**Map of Church  
Upper Level – 300**

